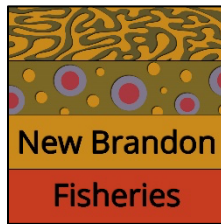
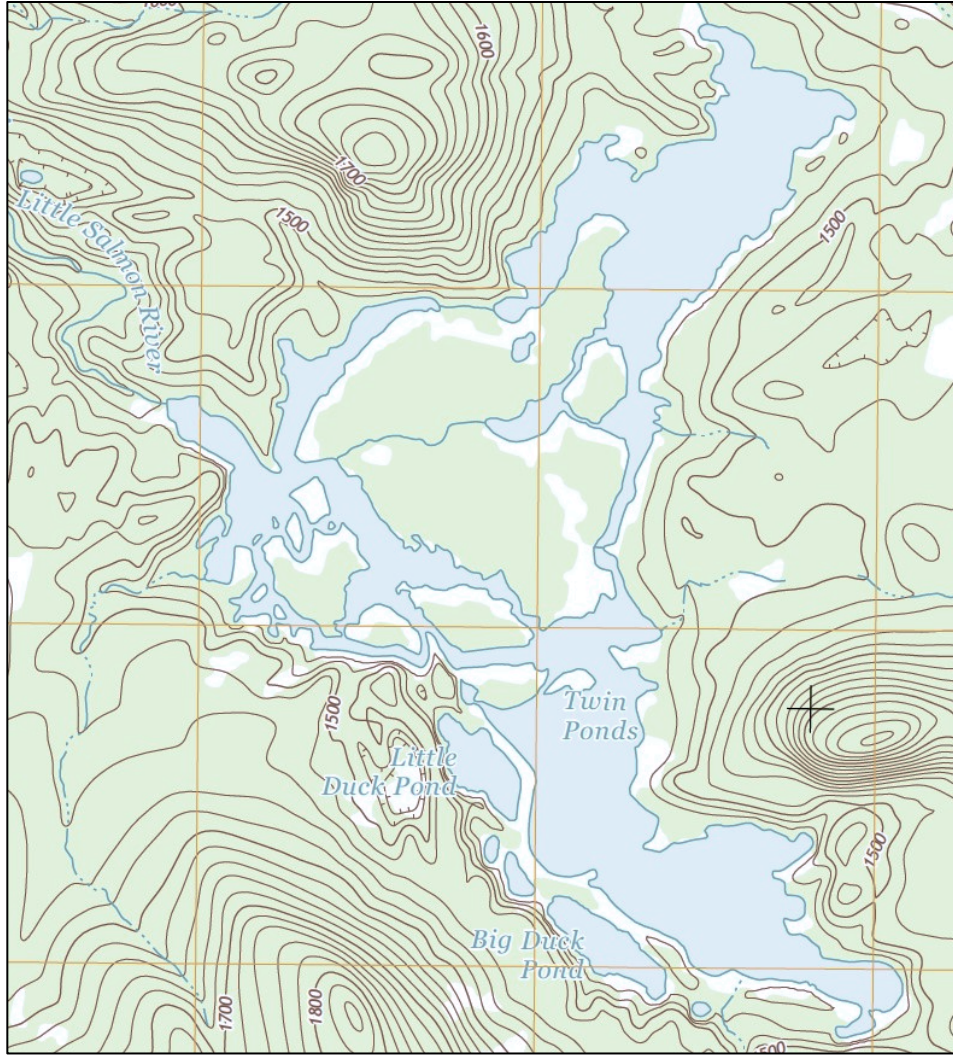


Twin Ponds Preserve
Spring 2026 Fisheries Report
June 2026



29 Brandon Road
Paul Smiths, NY 12970

Phone: (518) 327-3534
Email: newbranfish@gmail.com

Twin Ponds Preserve
Spring 2026 Fisheries Report
June 2026

Table of Contents

- I. Introduction ... 1
- II. Results ... 1
- III. Discussion ... 2
- IV. Recommendations ... 3

List of Images

- 1. Twin Ponds Netting Survey Sites ... 1

List of Tables

- 1. Twin Ponds Brook Trout Length Frequency, Spring 2026 ... 2
- 2. Twin Ponds Brook Trout Length Frequency, Spring 2025 ... 2

List of Appendices

- 1. Twin Ponds Spring 2026 Netting Summary ... 5
- 2. Twin Ponds Spring 2026 Netting Data ... 6

I. Introduction

New Brandon Fisheries conducted the spring 2026 netting survey of Twin Ponds from May 11 through May 15, 2026. Four modified Oneida-style trap nets, each equipped with 100-foot leaders and 25-foot wings, were set at the following locations: Outlet (Little Salmon Headwaters), Lean-to (Lower Twin Pond), Point (Upper Twin Pond), and Sand Bar (Spring Pond). Image 1 shows the netting locations, identified by red dots.

All brook trout captured during the survey were weighed, measured, and released alive back into the pond. Each fish also received a small fin clip on the upper caudal fin to allow identification of recaptured individuals during the second net tend.

All non-salmonids captured during the survey were removed from the pond and disposed of off-site. For each species, the first 25 individuals sampled were measured and weighed. Any additional non-salmonids collected during the survey were sorted by species and weighed in bulk.

To standardize the data and improve year-to-year comparability, variation in trap net effort was minimized by presenting results as biomass per unit effort (BPUE) for non-salmonid species and catch per unit effort (CPUE) for brook trout. These metrics represent the pounds or number of fish captured per net-night over the course of the survey. Only the first two tends of nets set in the standard locations were used to calculate BPUE and CPUE, which further reduces statistical variation among years.

II. Results

The spring 2026 netting survey of Twin Ponds resulted in the capture of 102 brook trout. The corresponding CPUE of 6.38 fish per net-night was slightly lower than that observed in spring 2025 (6.63 fish/net-night) but remained approximately twice the value measured in spring 2024 (3.19 fish/net-night). Average brook trout size was 14.1 inches and 1.14 pounds, and the largest individual sampled measured 20.2 inches and 3.00 pounds. Most fish captured were of quality size or larger, with 84 individuals (82.35 percent of the total catch) measuring at least 12.0 inches in length. Of these, 37 fish exceeded 15.0 inches in length, representing 36.27 percent of the total catch. One brook trout was identified as a recaptured fish during the second net tend.

A total of 174.76 pounds of non-salmonid species was collected during the survey. The species assemblage was dominated by white sucker (121.58 pounds, 69.57 percent of the total biomass) and brown bullhead (43.84 pounds, 25.09 percent). Pumpkinseed (8.81 pounds, 5.04

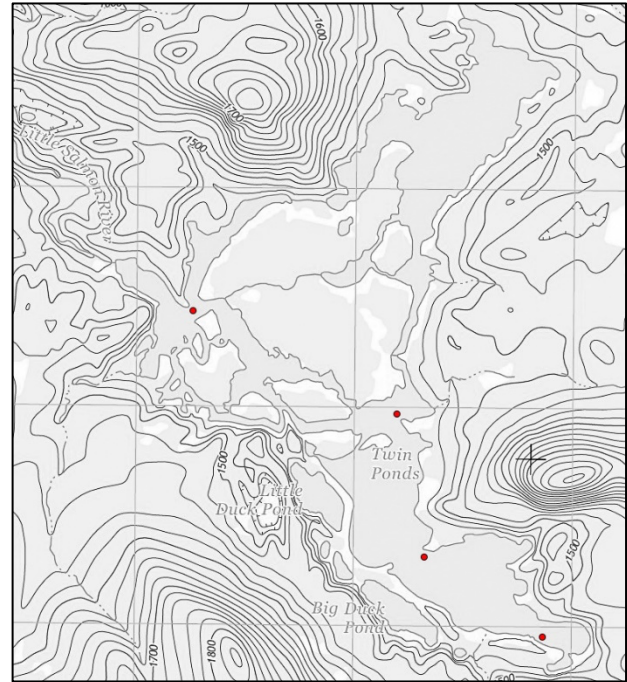


Image 1 – Twin Ponds netting survey sites

percent), creek chub (0.49 pounds, 0.28 percent), and pearl dace (0.04 pounds, 0.02 percent) accounted for the remainder of the catch. The combined BPUE of 10.92 pounds per net-night was more than tenfold lower than the value recorded during the inaugural spring survey in 2024 (118.66 pounds per net-night) and represented a decline from spring 2025 (54.28 pounds per net-night). Appendices 1 and 2 provide the netting summary and detailed data from the spring 2026 survey of Twin Ponds.

III. Discussion

The 2026 data exhibit trends that are both encouraging and consistent with the intended direction of management at Twin Ponds. The brook trout catch remained high, with a CPUE of 6.38 fish/net-night, while average fish size increased substantially relative to spring 2025. Table 1 illustrates brook trout length distribution in the spring 2026 sample and shows a fishery dominated by larger individuals, with over 80 percent of the catch measuring at least 12.0 inches and more than one-third of the total measuring greater than 15.0 inches. In contrast to spring 2025 (Table 2), when the catch was driven primarily by fish less than 12.0 inches in length, the 2026 sample indicates a shift toward a stronger representation of quality-size and larger brook trout.

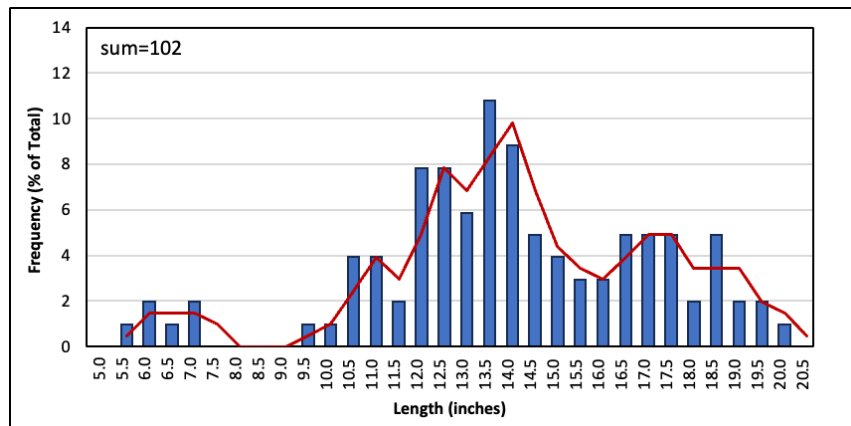


Table 1 – Twin Ponds Brook Trout Length Frequency, Spring 2026

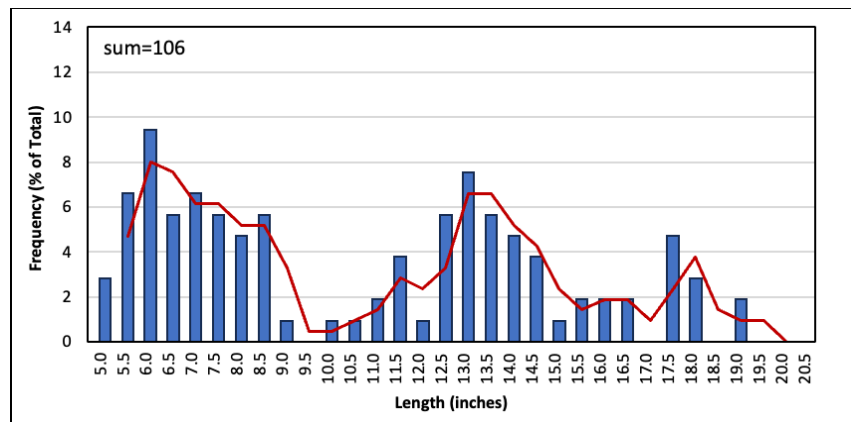


Table 2 – Twin Ponds Brook Trout Length Frequency, Spring 2025

Concurrent with this, BPUE of non-salmonid species continued to decline from spring 2024 through 2026. In 2026, BPUE measured 10.92 pounds per net-night, compared to 54.28 pounds per net-night in 2025 and 118.66 pounds per net-night in 2024. Decreased BPUE suggests a continued decline in the amount of non-salmonid biomass available for capture during the survey. If this pattern reflects an actual reduction in standing biomass, it would be expected to reduce competition and predation pressure on the resident brook trout population.

Twin Ponds in spring 2026 showed continued high brook trout abundance, a substantial improvement in trout size structure relative to 2025, and a major reduction in non-salmonid biomass relative to both 2024 and 2025. Taken together, these trends suggest that recent management actions are moving the fishery in a favorable direction, though continued annual monitoring is warranted to confirm persistence of these gains.

IV. Recommendations

Prior to the spring 2026 survey, Twin Ponds' management sought to implement cost-saving measures by switching to a biennial schedule consisting of a two-week netting survey and fall stocking of 2,000 fish. New Brandon Fisheries recommended maintaining an annual strategy: reducing stocking to 1,000 brook trout and shortening the netting survey to a fixed, one-week duration. The results of the spring 2026 survey support this recommendation, demonstrating that continuous, moderated annual pressure is superior to sporadic, intensive management. The precipitous decline of non-salmonid biomass per unit effort (BPUE) down to 10.92 lbs/net-night indicates that the non-salmonid population is being suppressed. However, historical fisheries management activities at Twin Ponds have demonstrated that complete eradication is biologically impossible via netting alone, and that these species possess a high reproductive velocity capable of rapidly rebounding if active management is paused.

To protect the significant ecological gains achieved while respecting management's fiscal constraints, the following strategies are recommended:

1. Maintain the Standardized One-Week Annual Netting and Removal Survey

Shifting to a biennial (every other year) schedule would create a dangerous 24-month management vacuum, allowing white sucker and brown bullhead populations to aggressively rebound unchecked. Conducting a one-week survey every year maintains an uninterrupted barrier against non-salmonid recovery while permanently reducing annual field labor and netting costs by 50% relative to the original two-week baseline.

2. Standardize the Cost-Effective Annual Stocking of 1,000 Hybrid Fingerlings

Maintaining a 1,000-fish annual stocking strategy helps eliminate recruitment gaps inherent to an every-other-year program, ensuring a smooth, predictable pipeline of younger fish entering the fishery each season. Because adult brook trout density is currently high and resource competition is low, dropping the annual stocking quota to 1,000 fingerlings prevents over-allocating financial resources and protects the pond from overcrowding, keeping growth rates at a premium.

3. Implement Strict Preventative Biosecurity Measures

The capture of two pearl dace (*Margariscus margarita*) during the 2026 netting survey marks the first detection of this non-salmonid species since monitoring resumed in 2023. This species is likely historically resident in the pond, remaining hard to detect due to its smaller size. Even so, its presence in the sample underscores the potential vulnerability of the Twin Ponds ecosystem to unauthorized outside fish introductions. If this is not already official policy, management should

establish a strict, zero-tolerance "No Live Bait" regulation across the entire preserve to eliminate the risk of bucket-introduced species like yellow perch or competitive minnows. Additionally, mandate clean, drain, and dry protocols for all guest watercraft brought onto the preserve to prevent the introduction of invasive aquatic vegetation or non-native parasites.

Appendix 1 – Twin Ponds Spring 2026 Netting Summary

Species	Size	Sample	Tot Ln	Tot Wt	Avg Ln	Avg Wt	Recaps
Brook Trout	<7"	4	25.2	0.33	6.3	0.08	
	7"-10"	3	24.0	0.58	8.0	0.19	
	10"-12"	11	121.2	5.49	11.0	0.50	
	12"-15"	47	628.8	41.12	13.4	0.87	
	>15"	37	642.3	68.26	17.4	1.84	
Brook Trout	All	102	1441.5	115.78	14.1	1.14	1

Species	Status	Sample	Tot Ln	Tot Wt	Avg Ln	Avg Wt
Brown Bullhead	Removed	25	146.3	2.24	5.9	0.09
				41.60		
				Total		
Creek Chub	Removed	4	26.9	0.49	6.7	0.12
Pearl Dace	Removed	2	8.9	0.04	4.5	0.02
Pumpkinseed	Removed	25	101.3	1.46	4.1	0.06
				7.35		
				Total		
White Sucker	Removed	25	210.6	6.18	8.4	0.25
				115.40		
				Total		
Tot. Wt. Removed				174.76		

Appendix 2 – Twin Ponds Spring 2026 Netting Data

Common Name	Length	Weight	Mass Wt	Recaps	Location	Date	Temp
Pumpkinseed	4.30	0.05			Leanto	5/13/26	51
Pumpkinseed	5.30	0.09			Leanto	5/13/26	51
Pumpkinseed	4.70	0.05			Leanto	5/13/26	51
Pumpkinseed	4.40	0.05			Leanto	5/13/26	51
Brown Bullhead			2.00		Leanto	5/13/26	51
Brook Trout	12.01	0.80			Sand Bar	5/13/26	51
Brook Trout	16.30	1.46			Sand Bar	5/13/26	51
Brook Trout	12.90	0.80			Sand Bar	5/13/26	51
Brook Trout	16.60	1.38			Sand Bar	5/13/26	51
Brook Trout	15.10	1.26			Sand Bar	5/13/26	51
Brook Trout	14.50	1.03			Sand Bar	5/13/26	51
Brook Trout	10.70	0.42			Sand Bar	5/13/26	51
Brook Trout	19.70	2.90			Sand Bar	5/13/26	51
Brook Trout	12.70	0.69			Sand Bar	5/13/26	51
Brook Trout	17.30	2.10			Sand Bar	5/13/26	51
Brook Trout	15.90	1.28			Sand Bar	5/13/26	51
Brook Trout	13.80	0.95			Sand Bar	5/13/26	51
Brook Trout	12.50	0.72			Sand Bar	5/13/26	51
Brook Trout	12.20	0.66			Sand Bar	5/13/26	51
Brook Trout	12.70	0.70			Sand Bar	5/13/26	51
Brook Trout	18.00	2.25			Sand Bar	5/13/26	51
Brook Trout	18.90	2.15			Sand Bar	5/13/26	51
Brook Trout	14.00	0.95			Sand Bar	5/13/26	51
Brook Trout	14.70	1.08			Sand Bar	5/13/26	51
Brook Trout	15.10	1.16			Sand Bar	5/13/26	51
Brook Trout	14.60	1.08			Sand Bar	5/13/26	51
Brook Trout	6.30	0.09			Sand Bar	5/13/26	51
Brook Trout	16.80	1.61			Sand Bar	5/13/26	51
Brook Trout	16.20	1.70			Sand Bar	5/13/26	51
Brook Trout	11.40	0.53			Sand Bar	5/13/26	51
Brook Trout	13.00	0.83			Sand Bar	5/13/26	51
Brook Trout	14.40	1.02			Sand Bar	5/13/26	51
Brook Trout	9.80	0.34			Sand Bar	5/13/26	51
Brook Trout	10.90	0.48			Sand Bar	5/13/26	51
Brook Trout	16.80	1.57			Sand Bar	5/13/26	51
Brook Trout	12.40	0.73			Sand Bar	5/13/26	51
Brook Trout	13.30	0.88			Sand Bar	5/13/26	51
Brook Trout	14.50	1.00			Sand Bar	5/13/26	51
White Sucker			19.60		Sand Bar	5/13/26	51
Brown Bullhead			8.90		Sand Bar	5/13/26	51
Brook Trout	16.40	1.63			Outlet	5/13/26	51
Brook Trout	18.10	2.20			Outlet	5/13/26	51
Brook Trout	10.80	0.49			Outlet	5/13/26	51
Brook Trout	13.50	0.98			Outlet	5/13/26	51
Brook Trout	14.00	0.95			Outlet	5/13/26	51

White Sucker	10.40	0.48			Outlet	5/13/26	51
White Sucker	9.00	0.27			Outlet	5/13/26	51
White Sucker	10.50	0.46			Outlet	5/13/26	51
White Sucker	10.20	0.45			Outlet	5/13/26	51
White Sucker	9.50	0.31			Outlet	5/13/26	51
White Sucker	6.90	0.13			Outlet	5/13/26	51
White Sucker	7.40	0.14			Outlet	5/13/26	51
White Sucker	9.00	0.26			Outlet	5/13/26	51
White Sucker	8.30	0.23			Outlet	5/13/26	51
White Sucker	8.60	0.27			Outlet	5/13/26	51
White Sucker	9.60	0.38			Outlet	5/13/26	51
White Sucker	7.90	0.19			Outlet	5/13/26	51
White Sucker	9.00	0.27			Outlet	5/13/26	51
White Sucker	8.00	0.20			Outlet	5/13/26	51
White Sucker	8.80	0.26			Outlet	5/13/26	51
White Sucker	7.50	0.16			Outlet	5/13/26	51
White Sucker	7.50	0.16			Outlet	5/13/26	51
White Sucker	7.40	0.16			Outlet	5/13/26	51
White Sucker	7.00	0.13			Outlet	5/13/26	51
White Sucker	7.40	0.16			Outlet	5/13/26	51
White Sucker	7.00	0.13			Outlet	5/13/26	51
White Sucker	5.20	0.06			Outlet	5/13/26	51
White Sucker	9.70	0.32			Outlet	5/13/26	51
White Sucker	10.10	0.38			Outlet	5/13/26	51
White Sucker	8.70	0.23			Outlet	5/13/26	51
White Sucker			24.20		Outlet	5/13/26	51
White Sucker			18.70		Outlet	5/13/26	51
Brown Bullhead	5.80	0.08			Outlet	5/13/26	51
Brown Bullhead	5.50	0.06			Outlet	5/13/26	51
Brown Bullhead	6.00	0.08			Outlet	5/13/26	51
Brown Bullhead	5.20	0.05			Outlet	5/13/26	51
Brown Bullhead	8.00	0.23			Outlet	5/13/26	51
Brown Bullhead	4.40	0.03			Outlet	5/13/26	51
Brown Bullhead	5.00	0.05			Outlet	5/13/26	51
Brown Bullhead	3.00	0.02			Outlet	5/13/26	51
Brown Bullhead	6.50	0.11			Outlet	5/13/26	51
Brown Bullhead	6.50	0.11			Outlet	5/13/26	51
Brown Bullhead	7.90	0.20			Outlet	5/13/26	51
Brown Bullhead	5.20	0.05			Outlet	5/13/26	51
Brown Bullhead	4.80	0.04			Outlet	5/13/26	51
Brown Bullhead	5.80	0.07			Outlet	5/13/26	51
Brown Bullhead	5.00	0.04			Outlet	5/13/26	51
Brown Bullhead	6.60	0.11			Outlet	5/13/26	51
Brown Bullhead	5.90	0.07			Outlet	5/13/26	51
Brown Bullhead	6.80	0.16			Outlet	5/13/26	51
Brown Bullhead	7.10	0.17			Outlet	5/13/26	51
Brown Bullhead	5.90	0.08			Outlet	5/13/26	51
Brown Bullhead	6.20	0.09			Outlet	5/13/26	51
Brown Bullhead	5.00	0.05			Outlet	5/13/26	51
Brown Bullhead	6.30	0.13			Outlet	5/13/26	51

Brown Bullhead	4.90	0.05			Outlet	5/13/26	51
Brown Bullhead	7.00	0.13			Outlet	5/13/26	51
Brown Bullhead			2.90		Outlet	5/13/26	51
Pumpkinseed	2.70	0.01			Outlet	5/13/26	51
Pumpkinseed	3.40	0.02			Outlet	5/13/26	51
Pumpkinseed	3.90	0.03			Outlet	5/13/26	51
Pumpkinseed	3.40	0.02			Outlet	5/13/26	51
Pumpkinseed	8.60	0.55			Outlet	5/13/26	51
Pumpkinseed	3.80	0.03			Outlet	5/13/26	51
Pumpkinseed	3.60	0.02			Outlet	5/13/26	51
Pumpkinseed	3.20	0.02			Outlet	5/13/26	51
Pumpkinseed	2.80	0.01			Outlet	5/13/26	51
Pumpkinseed	3.30	0.02			Outlet	5/13/26	51
Pumpkinseed	3.60	0.02			Outlet	5/13/26	51
Pumpkinseed	3.60	0.02			Outlet	5/13/26	51
Pumpkinseed	3.60	0.02			Outlet	5/13/26	51
Pumpkinseed	3.40	0.02			Outlet	5/13/26	51
Pumpkinseed	3.60	0.02			Outlet	5/13/26	51
Pumpkinseed	3.40	0.02			Outlet	5/13/26	51
Pumpkinseed	3.00	0.02			Outlet	5/13/26	51
Brook Trout	17.90	1.69			Point	5/13/26	51
Brook Trout	14.10	0.98			Point	5/13/26	51
Brook Trout	13.70	0.93			Point	5/13/26	51
Brook Trout	13.80	0.94			Point	5/13/26	51
Brook Trout	14.00	1.07			Point	5/13/26	51
Brook Trout	12.70	0.76			Point	5/13/26	51
Brook Trout	11.20	0.49			Point	5/13/26	51
Brook Trout	20.20	3.00			Point	5/13/26	51
Brook Trout	14.20	1.14			Point	5/13/26	51
Brook Trout	18.70	2.75			Point	5/13/26	51
Brook Trout	12.00	0.66			Point	5/13/26	51
Brook Trout	19.00	2.45			Point	5/13/26	51
Brook Trout	13.60	0.88			Point	5/13/26	51
Brook Trout	15.30	1.26			Point	5/13/26	51
Brook Trout	17.60	1.84			Point	5/13/26	51
Brook Trout	12.40	0.73			Point	5/13/26	51
Brook Trout	17.50	1.74			Point	5/13/26	51
Brook Trout	13.30	0.91			Point	5/13/26	51
Brook Trout	11.50	0.57			Point	5/13/26	51
Brook Trout	13.60	0.88			Point	5/13/26	51
Brook Trout	17.90	1.89			Point	5/13/26	51
Brook Trout	19.90	2.30			Point	5/13/26	51
Brook Trout	14.30	1.13			Point	5/13/26	51
Brook Trout	17.00	1.80			Point	5/13/26	51
Brook Trout	12.90	0.77			Point	5/13/26	51
Brook Trout	12.50	0.72			Point	5/13/26	51
Brook Trout	13.60	0.91			Point	5/13/26	51
White Sucker			23.00		Point	5/13/26	51

Brown Bullhead			7.00		Point	5/13/26	51
Brook Trout	18.70	2.30			Sand Bar	5/15/26	52
Brook Trout	18.50	2.15			Sand Bar	5/15/26	52
Brook Trout	18.70	2.15			Sand Bar	5/15/26	52
Brook Trout	16.50	1.80			Sand Bar	5/15/26	52
Brook Trout	17.20	1.75			Sand Bar	5/15/26	52
Brook Trout	13.60	0.85			Sand Bar	5/15/26	52
Brook Trout	6.40	0.08			Sand Bar	5/15/26	52
Brook Trout	17.00	1.71			Sand Bar	5/15/26	52
Brook Trout	15.10	1.26			Sand Bar	5/15/26	52
Brook Trout	14.40	1.05			Sand Bar	5/15/26	52
Brook Trout	16.80	1.71			Sand Bar	5/15/26	52
Brook Trout	14.60	0.95			Sand Bar	5/15/26	52
Brook Trout	11.20	0.55			Sand Bar	5/15/26	52
Brook Trout	7.20	0.13			Sand Bar	5/15/26	52
Brook Trout	6.60	0.10			Sand Bar	5/15/26	52
Brook Trout	15.70	1.22			Sand Bar	5/15/26	52
Brook Trout	13.10	0.83			Sand Bar	5/15/26	52
Brook Trout	7.00	0.12			Sand Bar	5/15/26	52
Brook Trout	5.90	0.06			Sand Bar	5/15/26	52
Brook Trout				1	Sand Bar	5/15/26	52
White Sucker			6.90		Sand Bar	5/15/26	52
Brown Bullhead			5.20		Sand Bar	5/15/26	52
Creek Chub	8.00	0.19			Sand Bar	5/15/26	52
Creek Chub	7.50	0.16			Sand Bar	5/15/26	52
Creek Chub	5.40	0.07			Sand Bar	5/15/26	52
Creek Chub	6.00	0.08			Sand Bar	5/15/26	52
Pumpkinseed			1.25		Sand Bar	5/15/26	52
Pearl Dace	4.50	0.02			Leanto	5/15/26	52
Pearl Dace	4.40	0.02			Leanto	5/15/26	52
Pimpkinseed			5.50		Leanto	5/15/26	52
Brook Trout	12.10	0.66			Outlet	5/15/26	52
Brook Trout	12.00	0.66			Outlet	5/15/26	52
Pumpkinseed	6.70	0.22			Outlet	5/15/26	52
Pumpkinseed	5.20	0.09			Outlet	5/15/26	52
Pumpkinseed	4.00	0.03			Outlet	5/15/26	52
Pumpkinseed	3.80	0.02			Outlet	5/15/26	52
Pumpkinseed			0.60		Outlet	5/15/26	52
White Sucker			17.60		Outlet	5/15/26	52
Brown Bullhead			10.00		Outlet	5/15/26	52

